



Miramar Yacht Club
Division One Lobel Regatta
July 16th, 2016



Sailing Instructions

Organizing Authority: Miramar Yacht Club, Sheepshead Bay, New York

1. Rules

- 1.1 This regatta will be governed by the rules as defined in the Racing Rules of Sailing.
- 1.2 Division One Lobel Regatta is a Non-Spinnaker race.

2. Participation and Registration

- 2.1 This regatta is open to cruising yachts of Miramar Yacht Club
- 2.2 All participating Yachts must have up to date PHRF ratings.
- 2.3 Updated PHRFs must be submitted to the race committee before 12:00 June 18th 2016.
- 2.4 For list of yachts with approved PHRF certificates please refer to <https://miramaryc.com/phrf-boats/>
- 2.5 The Entry fee is \$50 to be received by 12:00 June 18th 2016; Covers all Division One regattas in 2016.
- 2.6 No prior registration is necessary.
- 2.7 Participation in the Regatta shall be announced no later than 12:00 June 18th 2016

3. Notices to Competitors, Changes

- 3.1 Notices to competitors will be posted on the official notice board located MYC Clubhouse.
- 3.2 The NOR, SI and amendments thereto will be posted online at www.miramaryc.com.

4. Schedule

- 4.1 Captain's meeting - 11:00am, July 16th, 2016
- 4.2 First warning signal (series of short horn blasts) – 12:55pm, July 16th, 2016

5. Signals and Starting Sequence

- 5.1 MYC Committee boat flag will be raised from the mast and will be displayed throughout the race
- 5.2 5 minutes before start preparatory flag signal 'P' will be raised together with the short horn blast;
- 5.3 4 minutes before start preparatory MYC burgee will be raised together with the short horn blast;
- 5.4 1 minutes before start preparatory flag signal 'P' will be lowered together with the short horn blast;
- 5.5 Start is marked with one long horn signal and lowered MYC burgee.

6. Courses and Marks

- 6.1 The courses and marks will be announced at the Captains meeting

7. Start and Finish

- 7.1 The start and finishing line will be between SB1 (green can) and the race committee signal boat.
- 7.2 The race will be started using the Sound and Flag System.

8. Protests

- 8.1 Protests, requests for redress and requests to reopen a hearing shall be submitted verbally or in writing within 1 hours after race committee boat docks.

9. Scoring

- 9.1 Division One Trophy is one race regatta.
- 9.2 The scores will be calculated based on each yacht finish time and PHRF rating
- 9.3 Formula: FINISHTIME – (PHRF x DISTANCE), where finish time is in seconds

10. Communication

- 10.1 Competitors should monitor VHF USA channel 68 for communication with the race committee.
- 10.2 Except for emergency, a boat shall not make radio transmission while racing.

11. Disclaimer of Liability

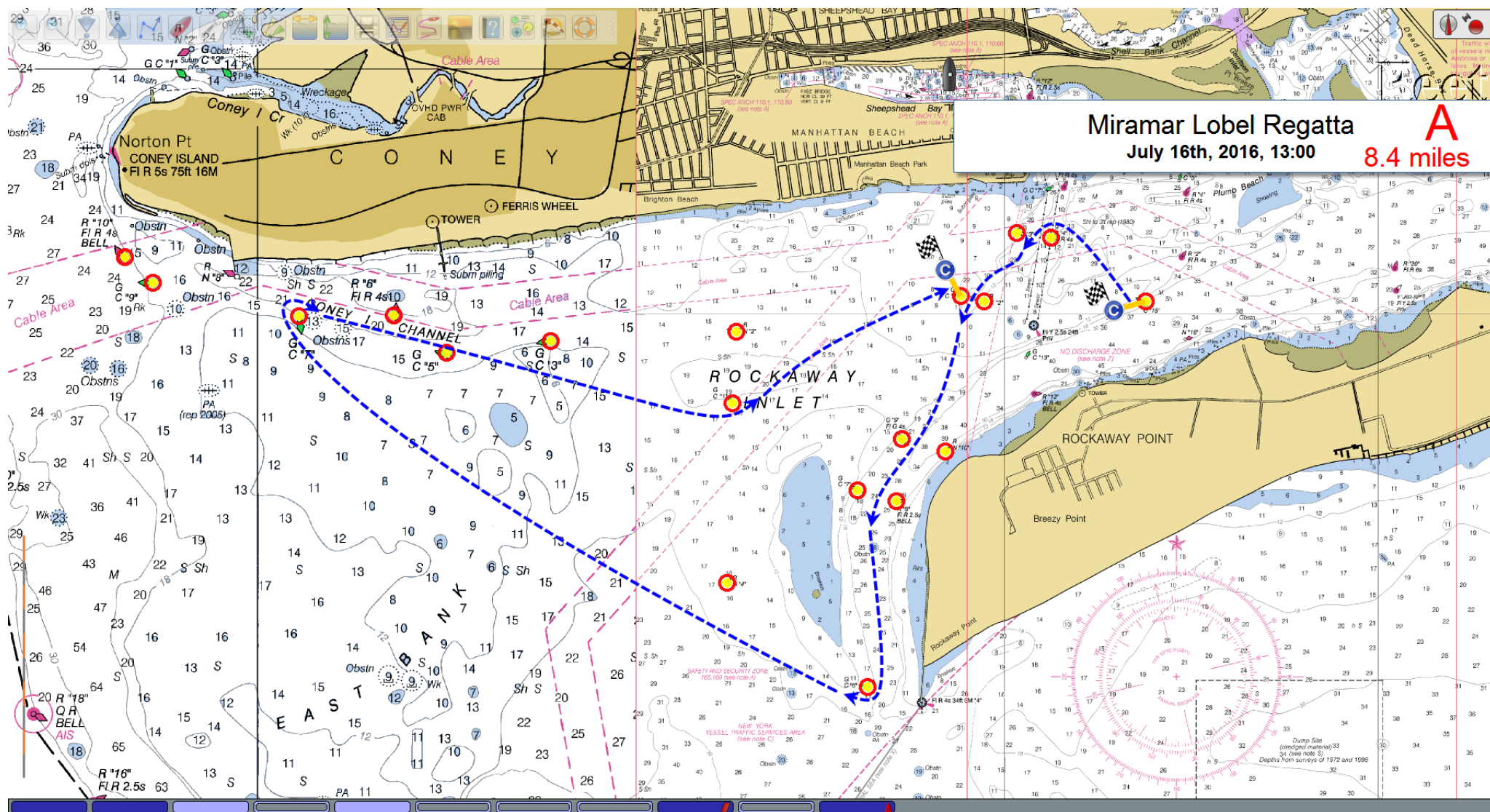
- 11.1 Competitors participate in the regatta entirely at their own risk. See rule 4, Decision to Race.
- 11.2 The organizing authority will not accept any liability for material damage or personal injury or death sustained in conjunction with or prior to, during, or after the regatta.

Miramar Lobel Regatta July 16th, 2016: Appendix

Course A

Start RW G15 - SB G3R4 - SB G3R4 - RW G9R10 - RW G7R8 - RW G5 s - CI G7 s - CI G1 p - Finish SB G1

Distance 10.13 miles

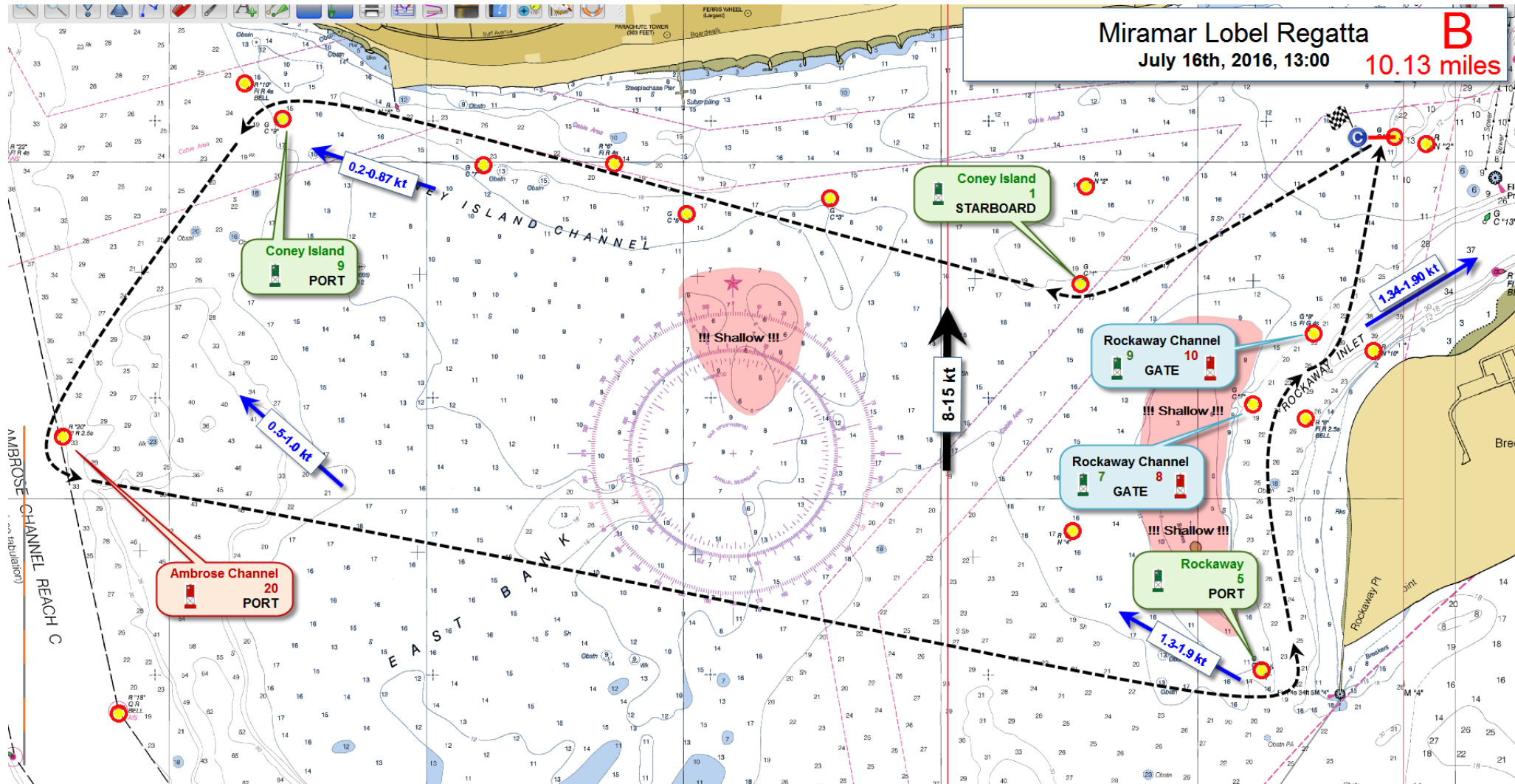


Miramar Lobel Regatta July 16th, 2016: Appendix

Course B

Start SB G1 - CI G1 s - CI G9 p - Amb R20 p - RW G5 p - RW G7R8 - RW G9R10 - Finish SB G1

Distance 10.13 miles



Distance 10.56 miles

